



U.S. National Library of Medicine

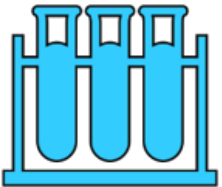


National Library of Medicine

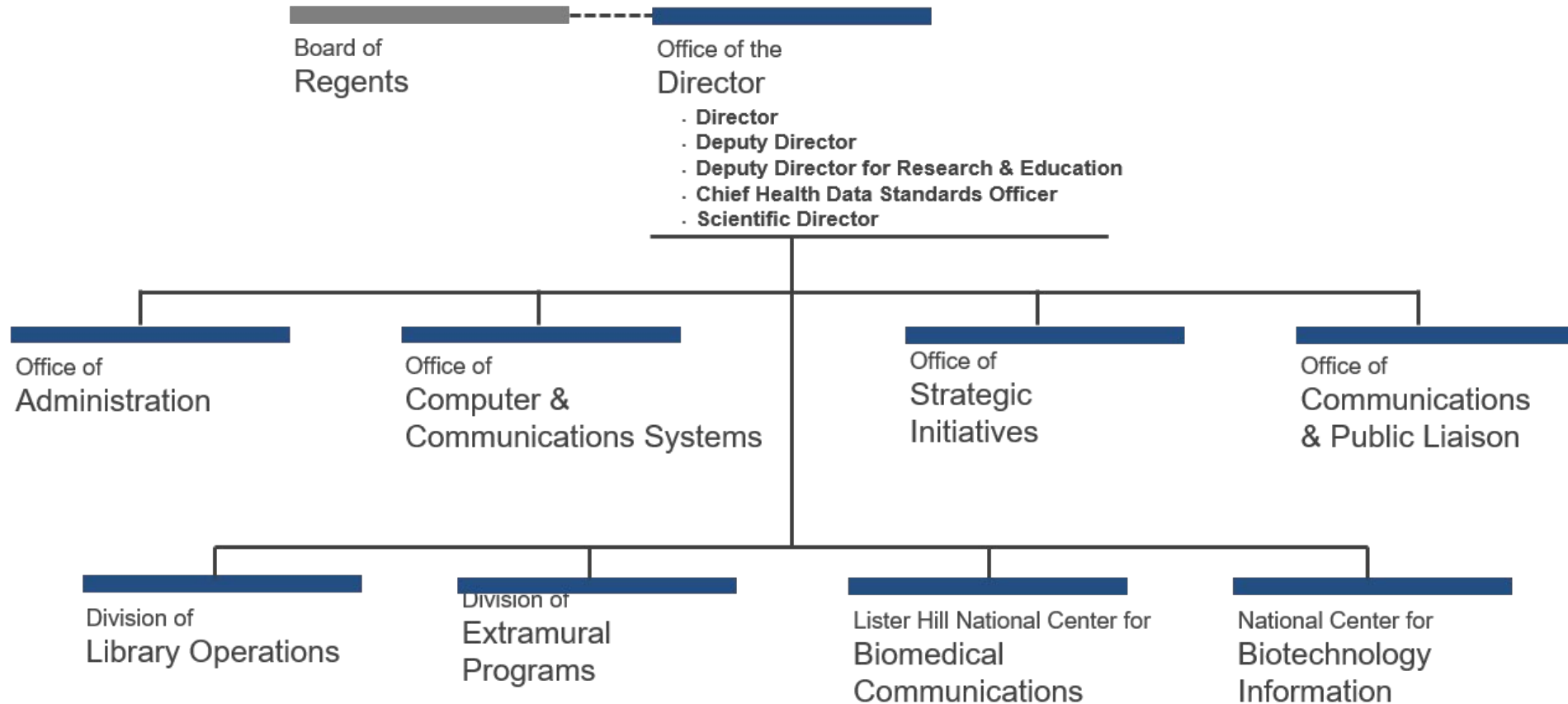
- The world's largest biomedical library (1836)

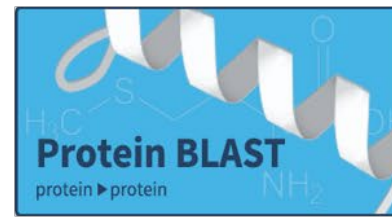
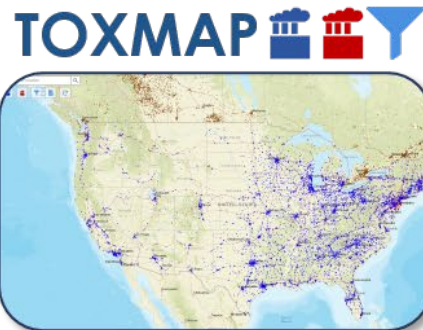
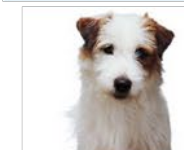
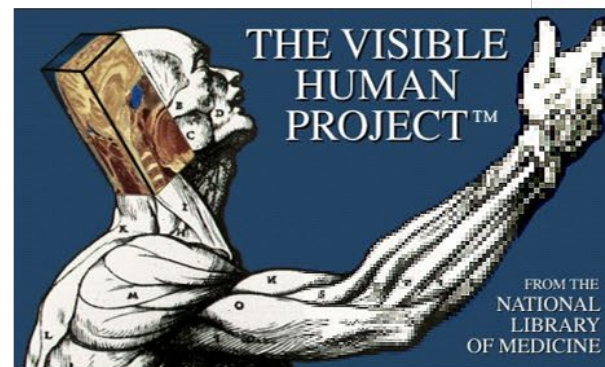


- Create & host major resources, tools, & services for literature, data, standards, & more
 - Send > 100 terabytes of data to > 4.5 million users daily
 - Receive > 10 terabytes of data from > 3,000 users daily
- Facilitate open science & scholarship by making digital research objects:
 - Findable, Accessible, Interoperable, & Reusable (FAIR)
 - As well as Attributable & Sustainable



- An Institute of the National Institutes of Health (NIH) (1968)
 - Lead, conduct, and support research and training in:
 - Biomedical Informatics and Data Science
 - Health-related Information Science





Improving our Physical Plant

- Building 38a
 - Improving the research environment
 - Consolidating ClinicalTrials.gov staff
 - Creating efficient administrative spaces
- Building 38
 - Create a workplace prepared for our 3rd Century
 - Data Center Security and Stability



Improving our technological infrastructure

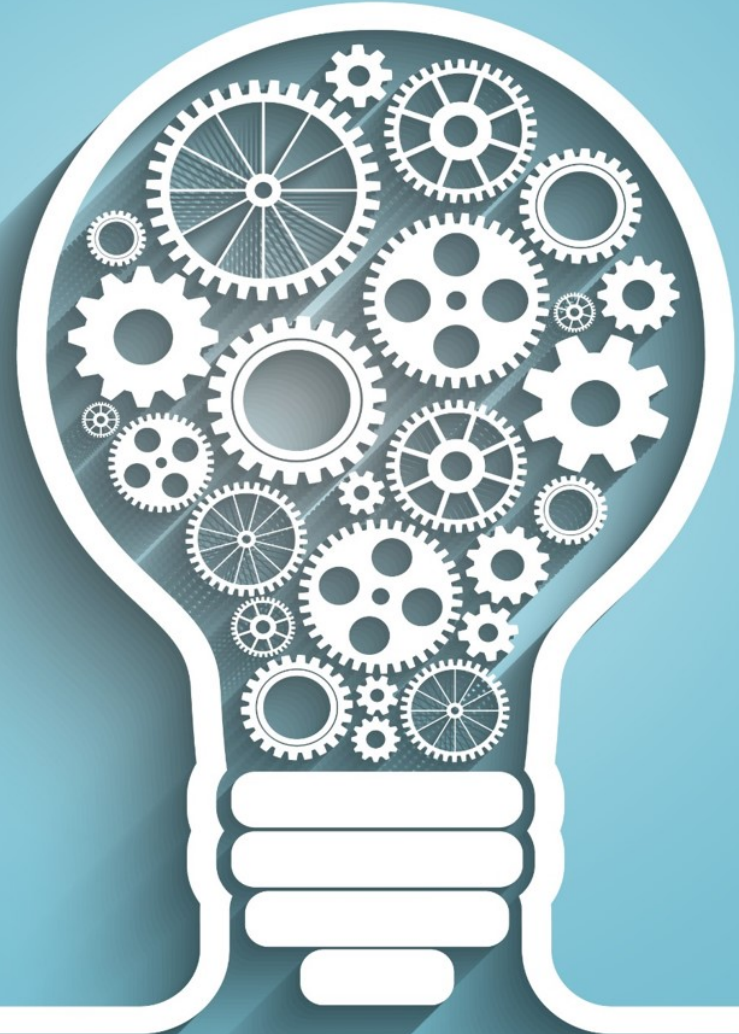
- Modernize ClinicalTrials.Gov
- Improve dbGaP workflows
- NLM Portfolio Analysis
 - Characterize and better manage over 100 offerings

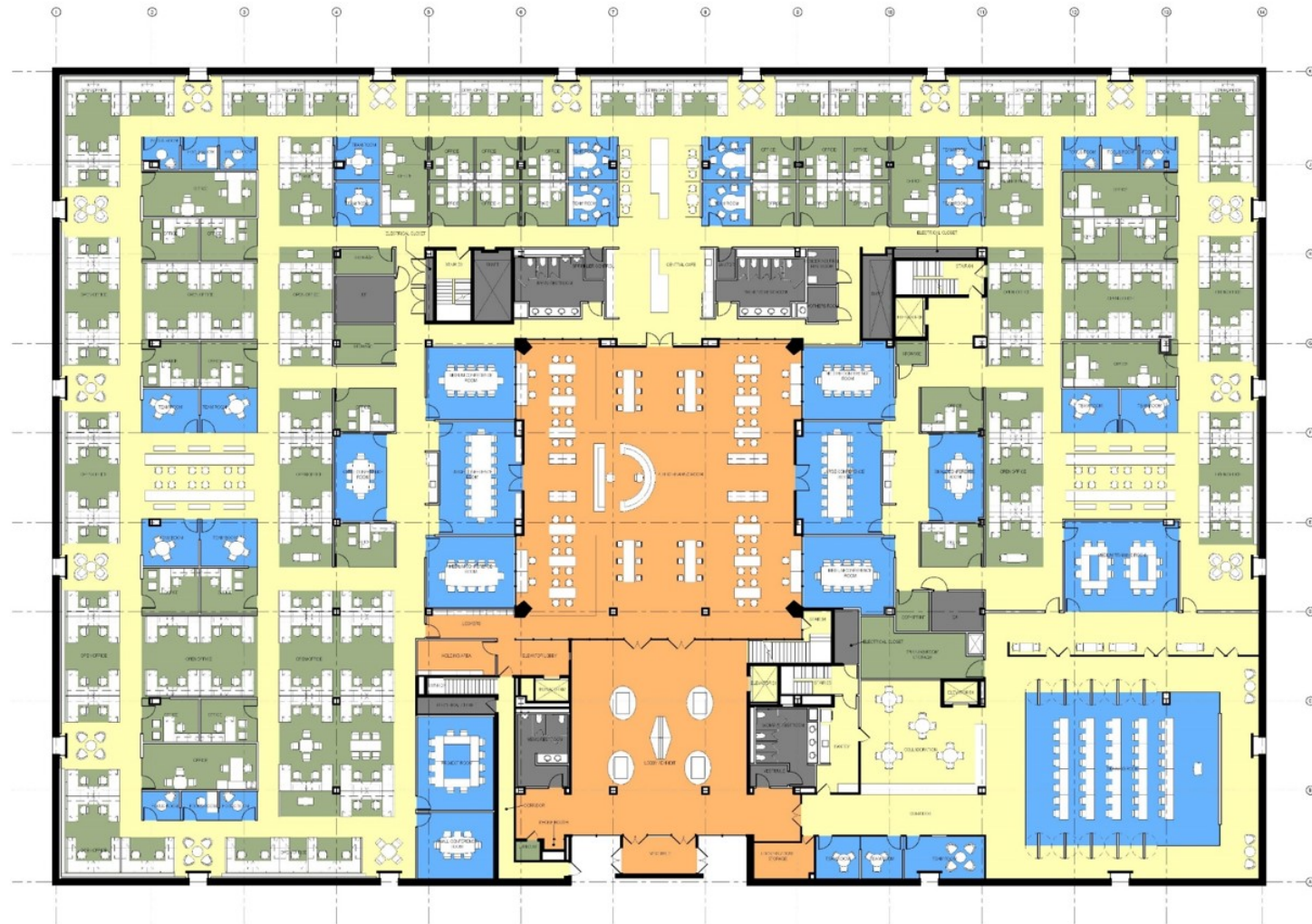


The 21st Century Collection

- Relevance-based results
- Automated annotation
- Personalized presentation & delivery

CUSTODIAN | CONNECTOR | DISCOVERER





PROPERTY OF THE US GOVERNMENT
FOR OFFICIAL USE ONLY
DO NOT REMOVE THIS NOTICE
PROPERLY DESTROY DOCUMENTS WHEN NO LONGER
NEEDED

BUILDING 38 FIRST FLOOR RENOVATION
NATIONAL LIBRARY OF MEDICINE

PHASE 2









**Build a workforce
for data-driven
research and health**

Reaching NLM



@NLM_NEWS
@NLMdirector



patti.brennan@nih.gov